

# MEETING 4<sup>TH</sup> OF JUNE

---

HANDS OFF OUR RATES



# AGENDA

---

- What happened so far
- Rate rises and numbers
- QUESTION TIME
- The plan to save the shire
- How can you help

# ASK YOURSELF

---

- HOW did we get here?
- WHO is responsible?
- And WHAT are those responsible doing to get us out of this mess?

# 3 MINUTES – SIMPLE TERMS

---





# WHAT DOES THAT MEAN FOR YOU

---

- Each and every person OWES - \$1,000.-- to \$3,100.-- now (growing)
- Rates planned to TRIPLE over 10 years
- Fees and Charges are going up as well – higher % of your bill
- Are you financing YOUR - or someone else's lifestyle/convenience?

# WHY DO WE STAND UP ?

---

## Because the Tenterfield Shire Council:

- **Are NOT Trustworthy** - Don't Do what They Say / Promise
- Have already **\$19 Million in Loans** and digging the hole deeper
- Have **NO Plan or Idea** how to save the Shire – other than getting **YOU** to pay for everything

# WHAT HAPPENED SO FAR

---

ONGOING



# INPUT

# COMMUNITY REQUEST

# OUTPUT

Input	Community Request	Result
Budget with 6.45M Deficit	Save 15%	-\$ 6.45 Budget <b>APPROVED</b>
<b>No Rise in Fees And Charges</b>	NIL	Fees and Charges <b>RAISED</b>
Strategic Plan “fluffy, old, irrelevant”	hundreds of inputs	fluffy, old, <b>APROVED</b> Council report says: <b>“GENERALLY HAPPY”</b>
Rate Rise 109% → 200%	<b>NO RATE RISE</b>	2.5 now and foundation laid for Special Rare Variation
By-Pass Committee	OSOCI Applied	<b>Rejected</b>
<b>WTP Documents are available</b>	Requested	<b>NO documents</b>



# HOW DO WE RATE THE COUNCIL

---

ONGOING

# TSC SCORECARD I

---

- Emails and input received by community 265
- Meaningful responses of ANY kind to community 0
- True and honest information sent to community on Rate Rise 0
- Misleading Interviews on Radio 3
- False Information on Social Media by Mayor 2
- Ideas to FIX the financial hole presented to community 0
- Businesses and Residents scared to speak up hundreds
- **FIT FOR FUTURE since 2015** **FAIL**

# TSC SCORECARD II

---

- Participation in Strategic Plan redevelopment **No response**
- Revised POSITIVE Budget requested **No response**
- Participation in By-Pass Committee **Rejected**
- CEO at Chamber of Commerce Meeting **No Vision → Councillors**
- Councillors interacting with the community **Limited**
- Meeting with CEO and COO held – actions agreed **No response**
- Request for WTP information after Radio interview **No response**
- Council removed “unwanted” Councillor **\$200,000 cost**

# RATE AND CHARGES RISE

---

YOU PAY FOR EVERYTHING





# RATES AND CHARGES

- Proposal during Community Presentations

**109.602%** over 2-3 years



As part of the review of the Long-Term Financial Plan, an application for a Special Rate Variation (SRV) rate rise of 81% over two or three years has been proposed to fund current and future Council operations. The proposed rise only refers to the first two lines of your annual rates notice.

Long-Term Financial Plan - 2022-2026 - 2022-2026  
Council's website. Council has held community consultations in Tenterfield (2), Jennings, Sunnyside, Mingoola, Torrington, Bolivia, Drake, Urbenville, Legume and Liston.

As part of the review of the Long-Term Financial Plan, an application for a Special Rate Variation (SRV) rate rise of 81% over two or three years has been proposed to fund current and future Council operations. The proposed rise only refers to the first two lines of your annual rates notice - the Rating category ad-valorem (value) and the Base Amount. It DOES NOT apply to fees and charges on the rates notice.

the application of an SRV of 43% per year for two years :

	23/24	24/25	25/26		
	40.50%	40.50%	0.00%	Term of SRV	Compound effect
	2.50%	2.50%	2.50%	3 years	109.602%
	43.00%	43.00%	2.50%		
average	2023/24	2024/25	2025/26	Total increase	2025/26 average

	assessments	rate	increase	increase	increase	Total revenue	rate	increase
Average ordinary rate - All categories	5,007	\$ 995.24	\$ 403.75	\$ 80.37	\$ 48.83	\$ 1,488.84	\$ 2,003.20	\$ 504.36
Average ordinary rate - Residential	3,361	\$ 638.60	\$ 272.45	\$ 58.00	\$ 32.38	\$ 954.44	\$ 1,328.93	\$ 374.49
Average ordinary rate - Business	232	\$ 1,452.28	\$ 623.75	\$ 171.00	\$ 78.00	\$ 2,325.03	\$ 3,199.53	\$ 874.50
Average ordinary rate - Farm/land	1,405	\$ 1,618.27	\$ 695.86	\$ 195.08	\$ 82.73	\$ 2,592.94	\$ 3,391.94	\$ 800.00
Average ordinary rate - Mining	30	\$ 1,019.58	\$ 438.25	\$ 69.69	\$ 31.10	\$ 1,117.64	\$ 1,528.23	\$ 410.59
		\$ 4,848,182.97	\$ 2,081,278.69	\$ 529,228.53	\$ 287,482.25	\$ 5,384,968.44	\$ 10,145,132.41	\$ 4,760,163.97

- Example: **\$100** plus 40.5% - **\$140.5** + 40.5% = **\$197.40 (97.4% UP)**
- Underlying proposed 2.5% over 10 years = 200% = triple = **\$300**



# COUNCIL'S EXPLANATION FOR SRV

---

- We have TOO MANY Roads to maintain
- Any RATE rise goes straight into Infrastructure
- We CAN'T reduce the Administration Cost (General Pool)

## FACTS:

- Less than average km of Roads
- Less than average open public spaces
- Highest COST for Administration

# KNOW THE FACTS

---

## Your Public Facilities

	Result	Group Avg.
Public Swimming Pool Complexes (inc rock pools) (No.)	1	2
Public Halls (No.)	9	6
Public Libraries (No.)	2	2
Open Public Space (ha)	65	190
Total Road Length (km)	1,689	1,734

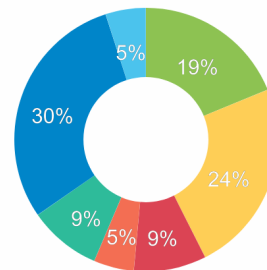
[www.yourcouncil.nsw.gov.au](http://www.yourcouncil.nsw.gov.au)

\* A NSW council group is determined firstly by whether they are Urban or Rural in nature, and then by population size and density. Please refer to OLG Groups in data tab on website for more information on how individual councils are classified. An OLG group average is then calculated by the average of the same group number eg. All Group 5 Regional Towns/City or all Group 8 Rural.

# KNOW THE FACTS

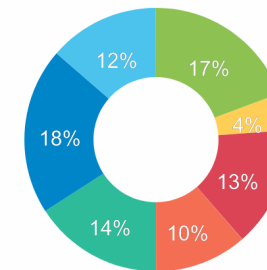
### Council Expenditure on Services (%)

- Governance & Administrat...
- Public Order, Safety, Healt...
- Environment (inc. waste)
- Community Services, Edu...
- Recreation & Cultural
- Roads, Bridges & Footpaths
- Other Services



### State Average Expenditure on Services (%)

- Governance & Administrat...
- Public Order, Safety, Healt...
- Environment (inc. waste)
- Community Services, Edu...
- Recreation & Cultural
- Roads, Bridges & Footpaths
- Other Services



## Your Council's Services

Governance & Administration Expenditure per capita (\$)

Public Order, Safety & Health Expenditure per capita (\$)

Water Services Expenditure per Capita (\$)

Sewer Services Expenditure per Capita (\$)

Environmental Expenditure (including waste ) per capita (\$)

Community Services, Education, Housing, Amenities Expenditure per capita (\$)

Recreation & Culture Expenditure per capita (\$)

Roads, Bridges & Footpaths Expenditure Per Capita (\$)

Other Services Expenditure per capita (\$)

	Result	Group Avg.
Governance & Administration Expenditure per capita (\$)	834.20	642.70
Public Order, Safety & Health Expenditure per capita (\$)	185.80	138.90
Water Services Expenditure per Capita (\$)	591.90	452
Sewer Services Expenditure per Capita (\$)	252.70	205.00
Environmental Expenditure (including waste ) per capita (\$)	365.90	300.20
Community Services, Education, Housing, Amenities Expenditure per capita (\$)	201.10	403.80
Recreation & Culture Expenditure per capita (\$)	369.40	426.50
Roads, Bridges & Footpaths Expenditure Per Capita (\$)	1,276.60	983.50
Other Services Expenditure per capita (\$)	200.60	525.20

# KNOW THE FACTS

---

## Your Council's Rates & Charges

	Tenterfield Result	NSW Group Avg.
Avg Ordinary Residential Rate (\$)	624.50	781.80
Avg Ordinary Business Rate (\$)	1,280.00	1,575.70
Avg Ordinary Farmland Rate (\$)	1,569.20	2,922.10
Avg Ordinary Mining Rate (\$)	900.00	389,816.20
Total Land Value / Total Rate Revenue (\$)	170.00	152.00
Typical Residential Water Bill (\$)	847.90	811.10
Typical Residential Sewer Bill (\$)	1,138.00	651.00
Typical Residential Water & Sewer Bill (\$)	1,985.90	1,299.90
Avg Domestic Waste Charge (\$)	293.20	340.60



# MOST EXPENSIVE PER CAPITA IN AUSTRALIA



[NSW Overview](#)

[Your Council](#)

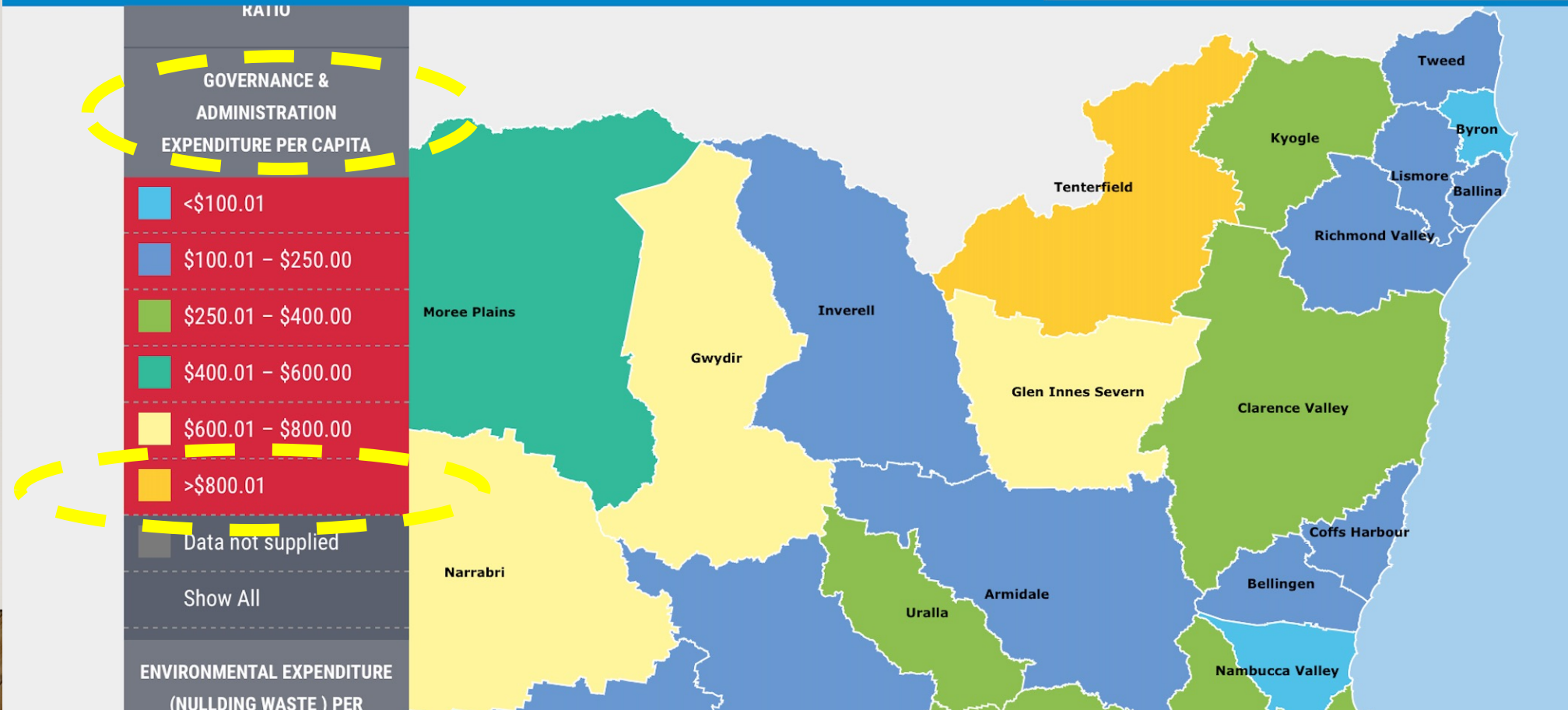
[Compare Councils](#)

[Data](#)

[FAQ](#)

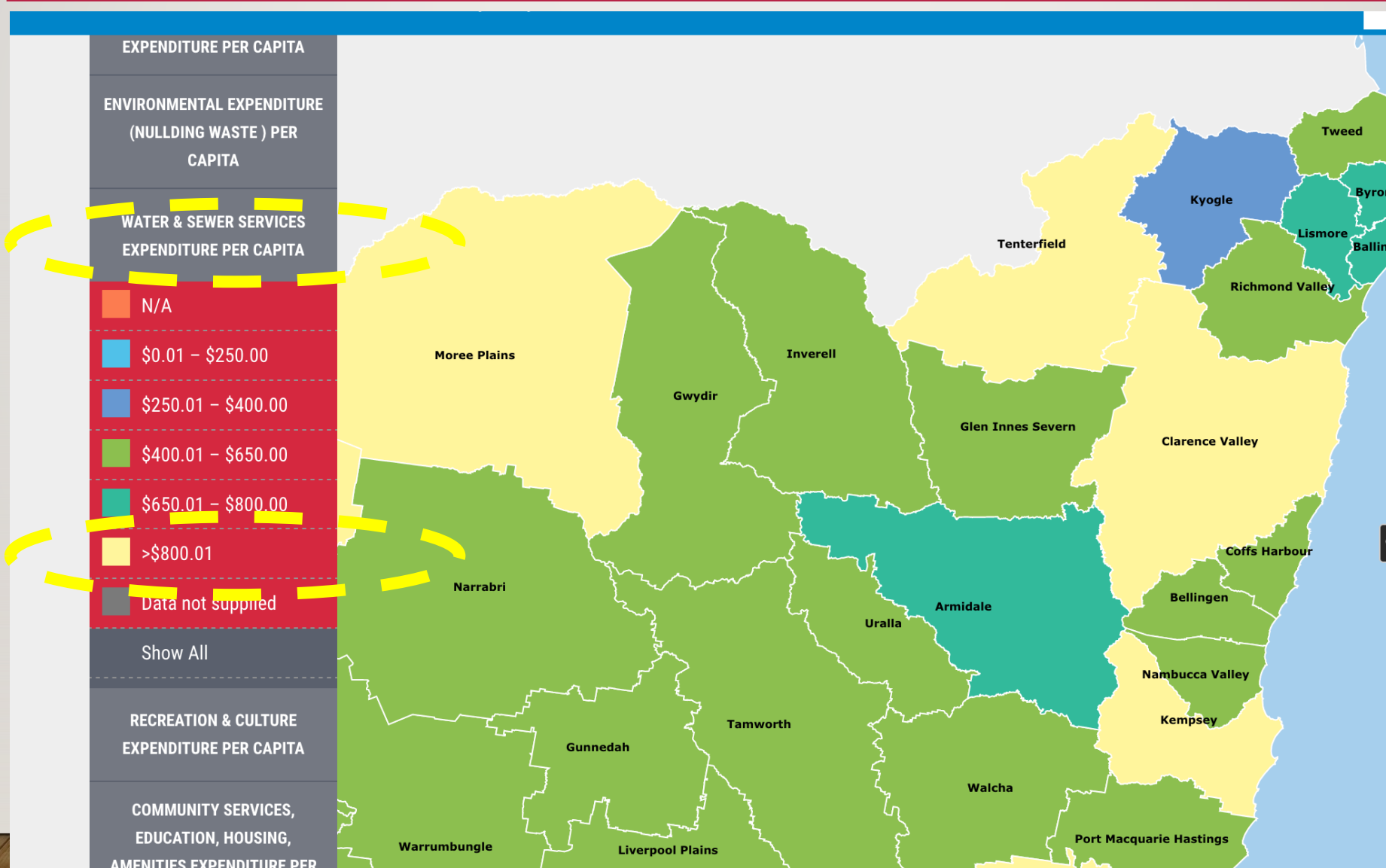
All Councils  Sydney Metro Councils

Select your council





# MOST EXPENSIVE PER CAPITA IN AUSTRALIA



# MOST EXPENSIVE PER CAPITA IN AUSTRALIA

---

- AGENDA 25<sup>th</sup> May - pages 288 to 293 comparisons to last years fees and charges
- Residential water annual fee Ly \$537 - proposed \$618 + \$81
- Water connect annual fee Ly \$1255. Proposed \$1320 + \$65
- Rubbish collect 120lt. Ly \$413 proposed. \$ 447 + \$34

Whilst our rate component is a little lower than other comparable shires our fees are already higher for sewerage, rubbish and water connection.

**Also these areas are showing an operating profit so why is this necessary.**



# QUESTION TIME

---



# WHERE DO WE STAND

---

AS A COMMUNITY



# TENTERFIELD SHIRE A DYING COMMUNITY

## NSW 2019 Population Projections



ASGS 2019 LGA projections

LGA projected population (totals)

ASGS 2019 LGA	2016	2021	2026	2031	2036	2041	
Tenterfield (A)	6,697	6,485 -212	6,280 -205	6,038 -242	5,758 -280	5,451 -307	-1,246



A decrease of 1,246 from the 2016 population over the next 25 years

## Your Local Economy

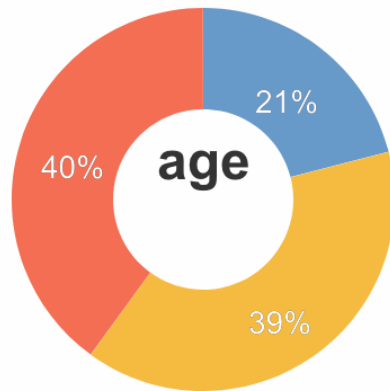
	Result	Group Avg.
Unemployment Rate (%)	7	4
Avg Taxable Income (\$)	36,711	50,735
Avg Household Size (No.)	2	2
Value of DA's determined (\$'000)	15,141	15,643
Active Businesses in LGA (No.)	965	860



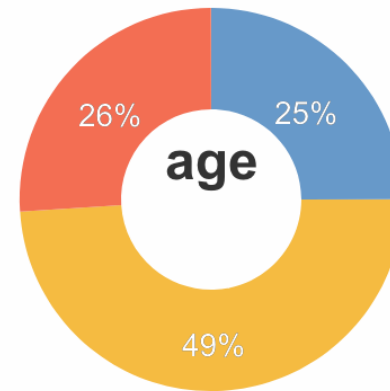
# KNOW THE FACTS

-  under 20 years
-  20 - 60 years
-  over 60 years

## Demographics of Population



Council population (%)



State population (%)

↓ 5.6%

population change last 5 years

\* A NSW council group is determined firstly by whether they are Urban or Rural in nature, and then by population size and density. Please refer to OLG Groups in data tab on website for more information on how individual councils are classified. An OLG group average is then calculated by the average of the same group number eg. All Group 5 Regional Towns/City or all Group 8 Rural.

# TENTERFIELD SHIRE A DYING COMMUNITY

## TENTERFIELD SHIRE COUNCIL – CIP

### NOT FIT

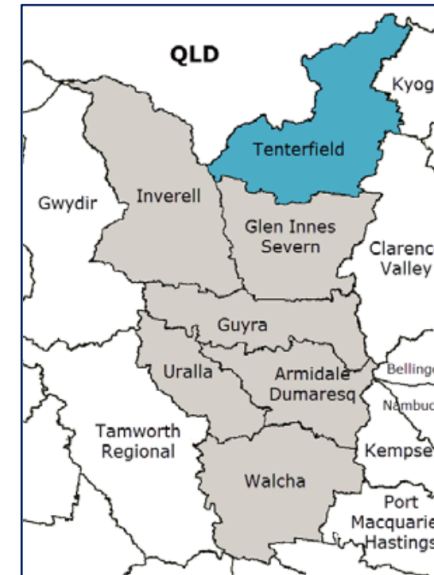
Area (km <sup>2</sup> )	7,024	Population 2011	7,000
OLG Group	10	(2031)	7,150
ILGRP Group	F		
Operating revenue (2013-14)	\$10m	TCorp assessment	Weak FSR Negative Outlook

ILGRP option Council in New England JO (shaded area).

Assessment summary	Scale and capacity	<b>Satisfies</b>
	Financial criteria:	<b>Does not satisfy overall</b>
	• Sustainability	Does not satisfy
	• Infrastructure and service management	Satisfies
	• Efficiency	Satisfies

### Fit for the Future – NOT FIT

- The council satisfies the scale and capacity criterion.
- The council does not satisfy the financial criteria overall. While it satisfies the infrastructure and service management and efficiency criteria, it does not satisfy the sustainability criterion based on its forecast for a negative operating performance ratio by 2019-20.
- We consider the operating performance ratio benchmark is a key measure of financial sustainability that all Fit for the Future (FFTF) councils should meet, therefore the council is not fit.



# LOANS - DEBT

---



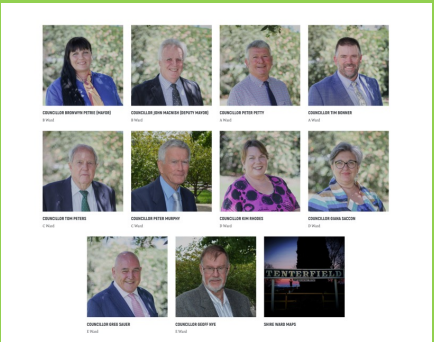
# WHERE DO WE STAND



Administration



ALL (more or less) happily fighting each other



Ratepayers Association



# GAP BETWEEN MORALS AND ACTIONS

---

## MORALS

No one wants to hurt the Shire or the People  
We all want the Shire to prosper, live a good life, have health, work and money in good shape.

How can we get the Gap closed ?



## ACTIONS

What are WE ALL doing or not doing?



SO .....

---

- HOW did we get here?
- WHO is responsible?
- And WHAT are those responsible doing to get us out of this mess?
- What would the Council WANT you to do?

# OPTION TO REVITALISE TENTERFIELD SHIRE

---

WHAT would you DO to **support a project** that brings:

- 50 new businesses
- 250 Jobs
- and over \$13 Million of **Additional** turn over per year

into the shire

# ACTION PLAN TO ENGAGE

---

- What can YOU do to speak up?
- Sign up to OSOCI – [www.osoci.org](http://www.osoci.org)
- Become involved and actively work on CHANGE
- Next Council Election – prepare yourself as a Councillor
- Participate in the Economic Development

# PROPOSED CONTRIBUTION

---

FROM MEETING 9<sup>TH</sup> OF APRIL





# OFFER TO CONTRIBUTE GIVEN

